



PRODUCT DESCRIPTION

DHLA2000 electric linear actuator uses 30dB low-noise plastic motor gear, maximum load can reach 2000N, maximum speed 55MM/S, Can add Hall Sensor, upper and lower limit feedback, built-in magnetic induction, etc., Suitable for medical, furniture, industrial and other fields.

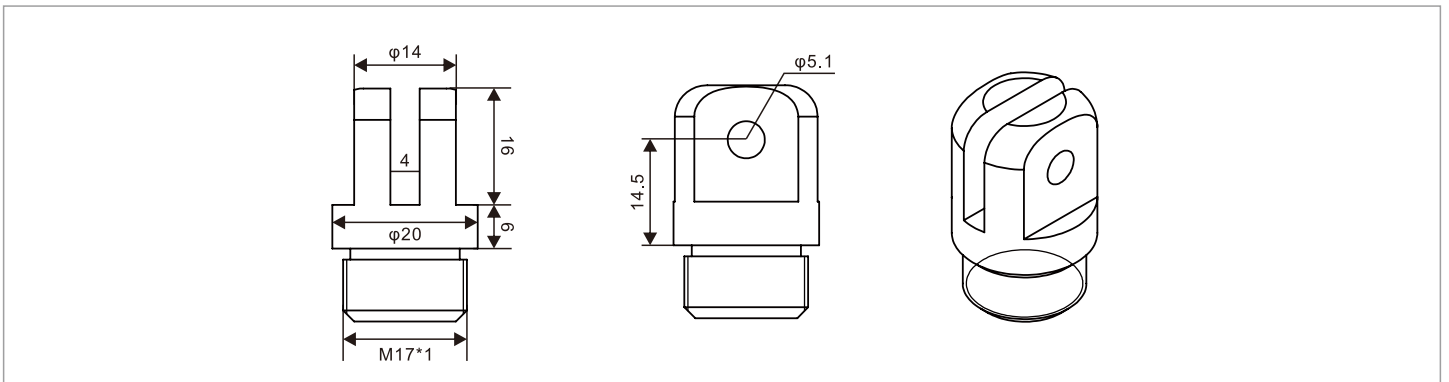
It can be installed in the automatic control system of Windows such as construction vehicles, cleaning vehicles, ships and cargo holds. Small capacity, compact design, high protection level

TECHNICAL PARAMETERS

Voltage	DC24~32V / DC12~19V										
Speed (MM/S)	5		6		12		20		40		55
Load Pull Capacity(N)	2000		1500		1000		500		300		200
Load Push Capacity(N)	2000		1500		1000		500		300		200
Self-locking Capacity(N)	2000		1500		1000		500		300		200
Stroke Length	100mm-800mm										
Color	Silver grey										
Limit Switch	Built-in										
Usage Frequenc	10% max 2min. continuous use										
Use Ambient Temperature	0°C~+50°C										

Optional Configuration

- ◆ Hall Sensor
- ◆ Magnetic Induction Switch
- ◆ Upper and lower limit feedback



OUTLINE DIMENSION DRAWING

